

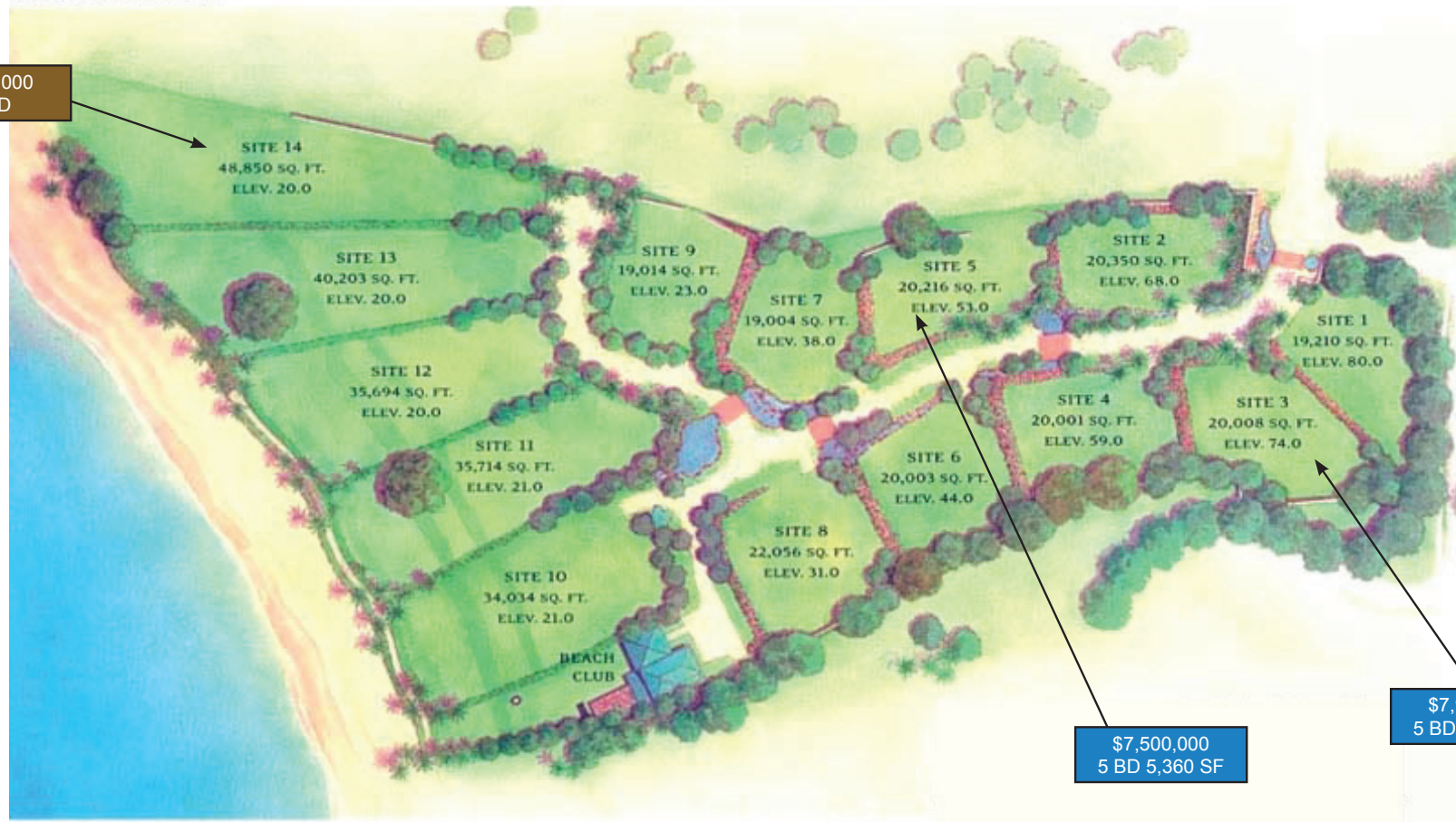


**GARY MOOERS**  
EXPECT THE EXTRAORDINARY

**www.GMMaui.com**  
Email: Gary@GMMaui.com 808.891.8989

**MALUHIA AT WAILEA - SITE PLAN**

©2002. GROUP 70 INTERNATIONAL, INC.



\$7,300,000  
SOLD

\$7,500,000  
5 BD 5,360 SF

\$7,950,000  
5 BD 5,331 SF

An oceanfront community of 14 distinctive custom residences  
3400 Wailea Alanui, Wailea, Hawaii 96753 |

- Sold
- Pending
- Active
- Land Only

*Maluhia*  
WAILEA

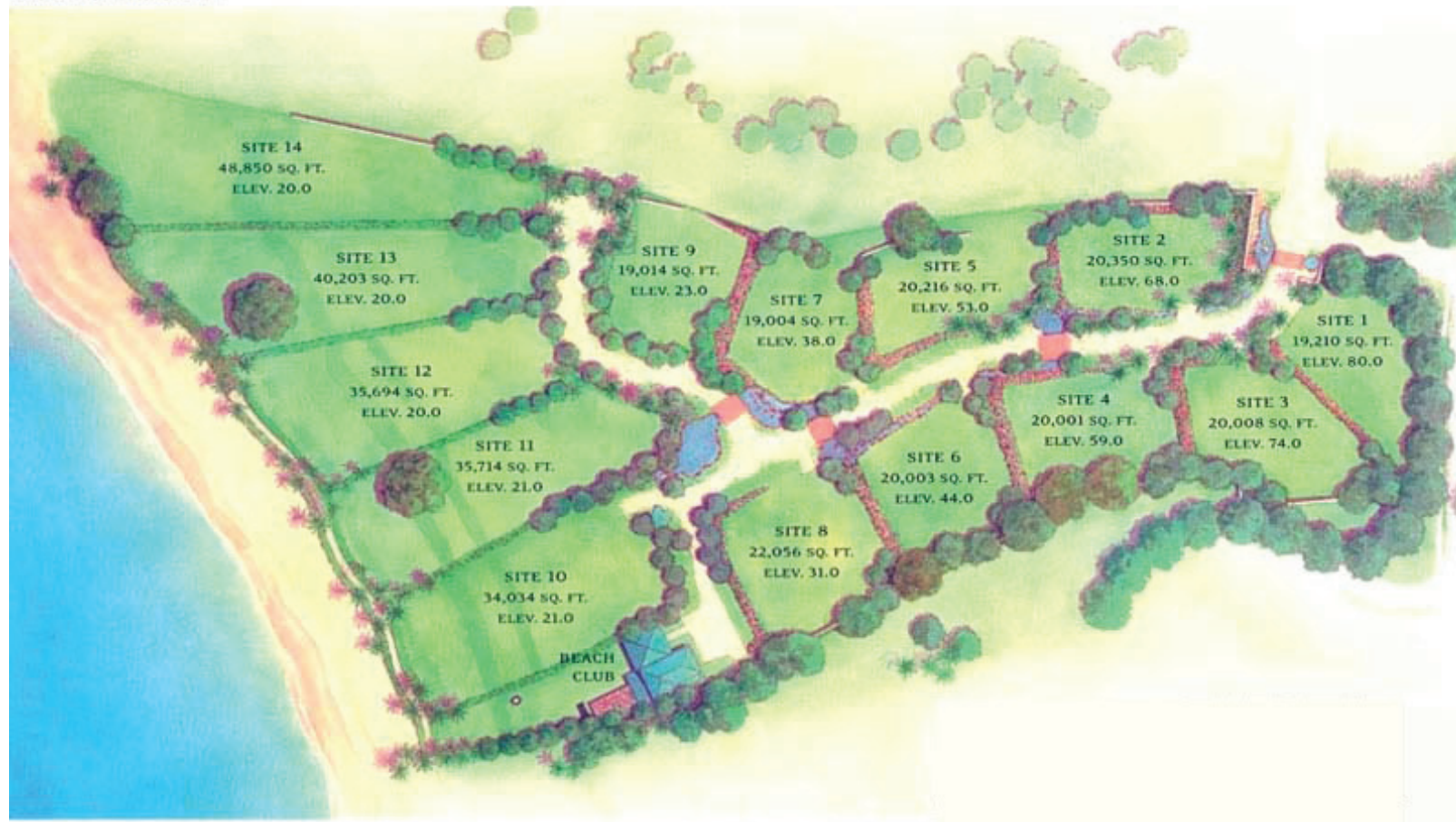


**GARY MOOERS**  
 EXPECT THE EXTRAORDINARY

**www.GMMaui.com**  
 Email: Gary@GMMaui.com 808.891.8989

**MALUHIA AT WAILEA - SITE PLAN**

©2002. GROUP 70 INTERNATIONAL, INC.



An oceanfront community of 14 distinctive custom residences  
 3400 Wailea Alanui, Wailea, Hawaii 96753 |

- Sold
- Pending
- Active
- Land Only

*Maluhia*  
 WAILEA